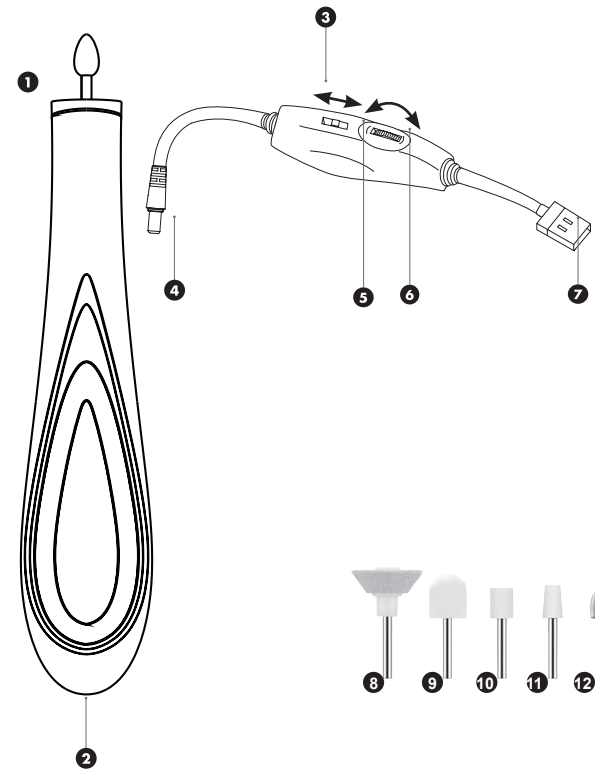


148mm

PROFESSIONAL ELECTRIC NAIL FILE



108mm

ENGLISH

WARNINGS

- Please read all instructions thoroughly and retain for future reference.
- Do NOT use this appliance if it is not working properly, or if it has been dropped or damaged.
- This appliance must only be supplied at safety extra low voltage corresponding to the marking on the appliance.

KNOW YOUR UNIT

PRODUCT

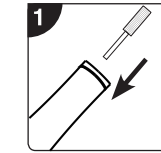
- 1 Electric Nail File
- 2 Jack Connector Socket
- 3 Controller
- 4 Jack Connector
- 5 Speed Controller
- 6 Dual-Direction / On / Off Switch
- 7 USB Connector

TOOLS

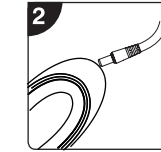
- 8 Coarse Disc Bit
- 9 Felted Wool Bit
- 10 Umbrella Top Bit
- 11 Barrel Bit
- 12 Cone Bit

108mm

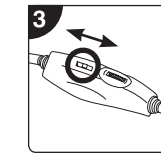
GETTING STARTED



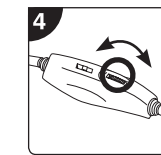
Select the tool and firmly insert into the top of Electric Nail File.



Connect the Controller. Plug the USB Connector into a USB power supply port.



Slide the Dual-Direction / On / Off Switch to turn on.



Adjust the speed using the Speed Controller.

108mm

AFTER USE

1. Switch the unit off and unplug from the USB power supply.
2. Pull Tool firmly to remove from the top of the Electric Nail File.

CARE AND MAINTENANCE

After each use clean the nail drill heads with soap and water, and sterilise by immersing in liquid disinfectant.

PRODUCT PARAMETER

Product Model	RB-015E	Material	ABS
Charging Voltage	DC5V	RPM	0-20000 rpm
Max. Power	0.5W	Product Dimension	146*32*31mm
Product G.W.	185g	Product N.W.	55g

108mm